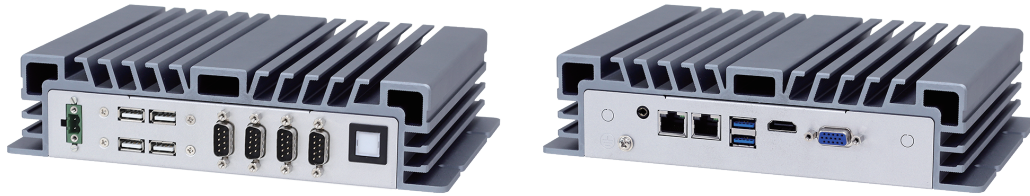


# BPC-3040

Fanless Embedded Box PC with Intel® Apollo Lake Pentium® N4200 Processor



## Key Features

- Power Efficient Intel® Pentium® / Celeron® Processors
- BPC-3040-2A1 Supports 32-bit Programmable Digital I/O
- Supports -20 ~ 70°C Extended Operating Temperature
- Supports Wide-range 9~36V DC Input
- Up to 1x mini PCIe and 1x M.2 for LTE/3G and WLAN Modules

## Applications

- Embedded Control Systems
- ATM / Self-Service / Kiosk
- Intelligent Transportation Systems
- Machine Automation

## → Ordering Information

Part No.	Description
BPC-3040-1A1	Intel® Pentium N4200 2.5GHz Quad-core CPU, 2x USB3.0, 4x USB 2.0, 3x RS-232, 1x RS-232/422/485, 2x GbE, 1x HDMI, 1x VGA, Line Out, DC 9~36 V, Phoenix Connector
BPC-3040-2A1	Intel® Pentium N4200 2.5GHz Quad-core CPU, 2x USB3.0, 2 x USB2.0, 2x RS-232, 1x RS-232/422/485, 2x GbE, 1x HDMI, 1x VGA, 32-bit GPIO, Line Out, DC 9~36 V, Phoenix Connector
BPC-3040-3A1	Intel® Celeron N3350 2.4 GHz Dual-core CPU, 2x USB3.0, 4x USB2.0, 3x RS-232, 1x RS-232/422/485, 2x GbE, 1x HDMI, 1x VGA, Line Out, DC 9~36 V, Phoenix Connector

## → Packing List

Description
1 x BPC-3040
1 x Power Adaptor
1 x Power Cord

## → Optional Items

Part No.	Description
AWD-4G003	4G(LTE) EG25-G + 2 Antennas, Full Size (for Global)
AWD-WF001	Wi-Fi 802.11 b/g/n (1T1R) + 1 Antenna, Half Size
AWD-WF003	Wi-Fi 802.11 a/b/g/n/ac/BT4.0 (2T2R) + 2 Antennas (Dual Band), Half Size

# BPC-3040

## → Specifications

Model		BPC-3040-1A1	BPC-3040-2A1	BPC-3040-3A1
Processor System	CPU	Intel® Pentium® N4200		Intel® Celeron N3350
	Frequency	Quad Core, 1.1 GHz, up to 2.5 GHz		Dual Core, 1.1 GHz, up to 2.4 GHz
	System Chipset	N/A		
	Cache	2 GB		
	BIOS	UEFI		
Memory	Technology	Dual Channel DDR3L 1866 MHz SDRAM		
	Max. Capacity	8 GB		
	Type	2x 204-pin SO-DIMM		
Display	Graphics Engine	Intel® HD Graphics 500		
	HDMI	1x HDMI 1.4, up to 3840 x 2160 @ 30 Hz		
	DP	N/A		
	VGA	1, up to 1920 x 1200 @ 60 Hz		
	DVI	N/A		
Front I/O Interface	USB	4x USB 2.0	2x USB 3.0, 2x USB 2.0	2x USB 3.0, 2x USB 2.0
	Serial Port	3x RS-232, 1x RS-232/422/485	2x RS-232, 1x RS-232/422/485	3x RS-232, 1x RS-232/422/485
	Ethernet	N/A		
	Audio	N/A		
	GPIO / DIO	N/A	32-bit Programmable DIO	N/A
	Antenna Hole	2		
	Others	N/A		
		N/A		
Rear I/O Interface	USB	2x USB 3.0		
	Serial Port	N/A		
	Ethernet	2x GbE (LAN 1/2: Intel® i211AT)		
	Audio	Line Out (Realtek® Audio Codec)		
	GPIO / DIO	N/A		
	Antenna Hole	2		
	Others	N/A		
Storage	2.5" HDD / SSD	1x SATA III (6.0 Gb/s)		
	M.2	1x M.2 2242 M Key (SATA III)		
	mSATA	N/A		
	RAID	N/A		
Expansion	Mini PCIe	1x Full Size (PCIe x1, USB 2.0)	N/A	1x Full Size (PCIe x1, USB 2.0)
	M.2	N/A		
	PCI / PCIe	N/A		
	SIM Holder	1		
Power	Power Mode	AT / ATX		
	Power Supply Voltage	9-36V DC Input		
	Power Connector Type	Phoenix Connector		
	Power Consumption (Typical)	0.77 A @ 12 V (9.2 W)	0.783 A @ 12 V (9.4 W)	0.583 A @ 12 V (7 W)
Mounting	Type	Wall Mount		
Environment	Operating Temperature	-20~70°C (-4~158° F) (Humidity: 60° C @ 80% RH Non-condensing) w/ Extended Temp. RAM & 2.5" SSD		
	Storage Temperature	-40~85°C (-40~185° F) (Humidity: 60° C @ 95% RH Non-condensing)		
	Humidity	5~95% @ 40° C, Non-condensing		
	Vibration	IEC 60068-2-64: 5Grms, random, 5~500 Hz, 1hr/axis		
	Shock	IEC 60068-2-27: 50G, half-sine, 11ms duration		
General	Certification	CE / FCC Class A		
	Thermal Dissipation	Fanless		
	Material	Extruded Aluminum		
	Dimensions (W x H x D)	238 x 55 x 165 mm (9.37" x 2.16" x 6.5")		
	Net Weight	1.97 kg (4.34 lb)	1.8 kg (3.96 lb)	1.78 kg (3.92 lb)
	Operating System	Windows 10 (IoT/Professional), Linux		

# BPC-3040

## → Dimensions

